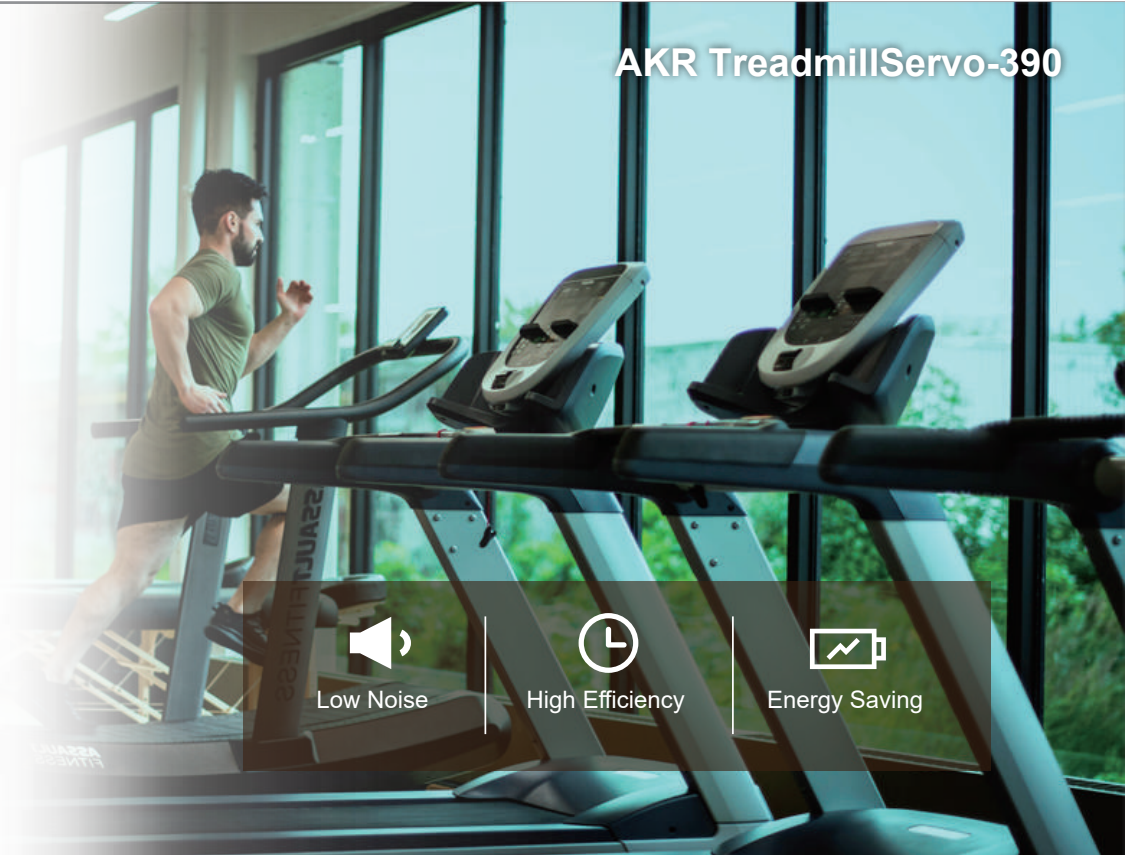


**ATS-390**

*Ultra-strong constant speed and torque output.*



## ATS-390 Treadmill DC brushless motor driver

Utilizing advanced Field Oriented Control (FOC) motor control theory, combined with Space Vector Pulse Width Modulation (SVPWM) technology, to drive the treadmill's dedicated DC brushless motor with sine wave output, achieving low noise, high efficiency, and energy-saving operation.

The brushless motor has no consumables; equipped with the ATS-390 driver, it maximizes the efficiency of the treadmill's DC brushless motor, promoting energy savings and environmental friendliness.

### Quiet operation/Low noise, High efficiency, Energy-saving.

- Feature 1** DSP + MCU space vector control architecture.
- Feature 2** High-speed response current loop and speed loop compensation.
- Feature 3** Built-in intelligent power module.
- Feature 4** Complete treadmill control panel interface.
- Feature 5** Built-in RS232/RS485 and BLE digital communication interfaces.



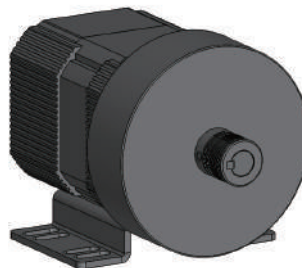
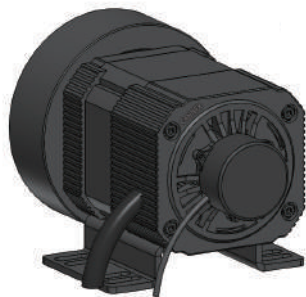
Web Link



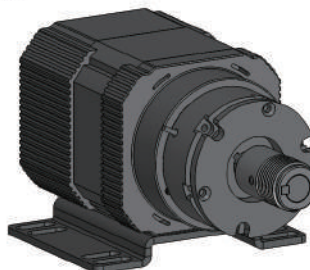
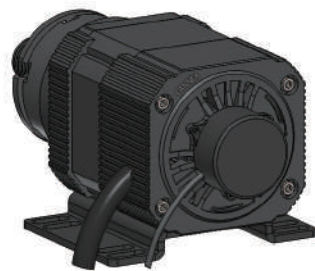
## Control Method

- 1 Integrates digital signal processor (DSP), microcontroller (MCU), intelligent power module (IPM), heat management, and power management into one, with a simple structure for easy installation. Fault code display for accurate diagnosis and easy maintenance; simple and correct plug-and-play connection. Fault code display for accurate diagnosis and easy maintenance; simple and correct plug-and-play connection.
- 2 Can connect traditional control interfaces with the treadmill control panel, featuring soft acceleration and deceleration control, with microcomputer intelligent PID computation that quickly compensates for lost speed, providing the most stable speed environment.
- 3 Equipped with RS232/RS485 and BLE digital communication interfaces for future multifunctional digital communication and control with the treadmill control panel. Can set minimum and maximum speeds based on different multifunctional control panels for optimal operation.

## Product Specifications



Large Flywheel



Small Flywheel

※Specifications are subject to change without notice.